



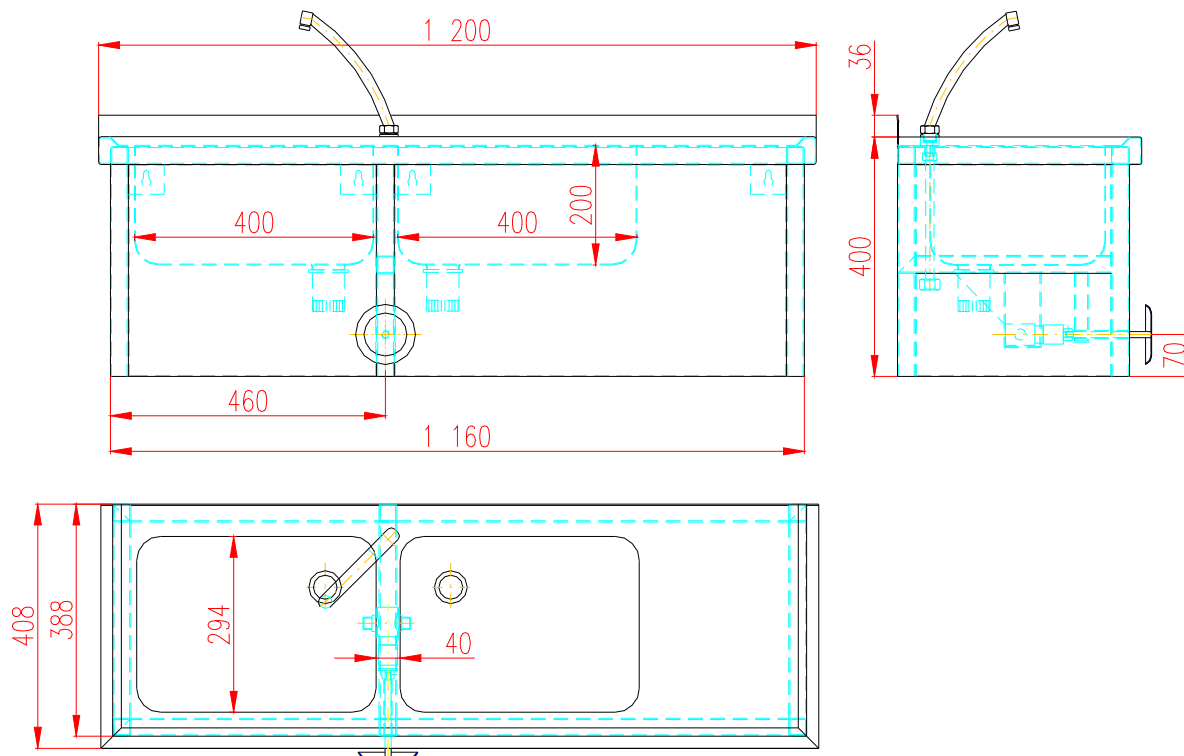
DOUBLE MECHANIC SINK UP THE WALL with storage area



Strojírna Pálava Maxima s.r.o.

DESÁTKOVÁ 124/15, 623 00 BRNO KOHOUTOVICE
Manufactory: TOVÁRNÍ 34, 679 32 SVITÁVKA, CZECH REPUBLIC
tel: +420 - 516 453 834, fax: +420 - 516 453 834
e-mail: info@s-palava.cz; www.s-palava.cz

DOUBLE MECHANIC SINK UP THE WALL with storage area



The double sink is made of stainless steel. Water running is knee-operated. The starting device is placed between the sinks. To the water pipes is the double sink connected with two angle valves (hot and cold water) that allow water temperature setting. The outlet drains the wastewater. According to the design is the double sink equipped with stacking board on the right or left side for washed items draining. With its construction and design answers to the high demands on cleanness and hygiene in food industry.

Technical data

Length	408 mm
Width	1200 mm
Height	400 mm
Weight	31 kg